



KK HOSPITAL  
HEALTH ENDOWMENT FUND

# ANNUAL REVIEW

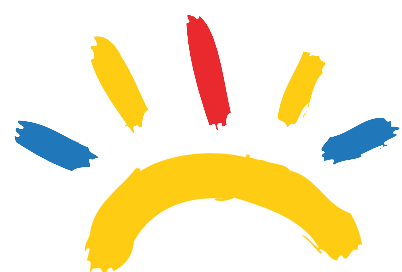


# 09 10



*"Because every  
woman and child  
deserves  
good health..."*





## KK HOSPITAL HEALTH ENDOWMENT FUND

### VISION

The best care to be given to patients free of financial constraints and to be an excellent support for the advancement of healthcare for women and children.

### MISSION

To raise funds for needy patients as well as education, research and disease prevention programmes targeted at women's and children's health.

The KK Hospital Health Endowment Fund (KKHHEF) was registered as a charity in 2002. It is administered by KK Women's and Children's Hospital Pte Ltd and governed by a Board of Trustees. The Board serves for a term of three years in an honorary capacity and receives no financial benefits from the fund. Donations to the fund are tax exempted.\*

#### BOARD OF TRUSTEES

##### Chairman

Professor Tan Ser Kiat

##### Members

Professor Ivy Ng

Dr Caroline Low

Mr Douglas Benjamin

Ms Laura Hwang

Mr Sushil Nair

Ms Tan Su Shan

#### CHARITY STATUS

Charity Registration Number: 1575

Charity Registration Date: 20 June 2002

ROS/RCB Registration Number: HEF0017/G

Institution of Public Character: A Member of MOH Health Endowment Fund Decentralised Special Account Scheme.

Auditor: KPMG

\*Except for donations to the KK Regional Outreach to Kids Fund



FY2009/10 has seen the KK Hospital Health Endowment Fund (KKHHEF) steer through another challenging year. While the income for the fund increased through our fund-raising efforts, the number of those who need assistance also continued to rise. Those in need appeal to us and KKHHEF will not turn a deaf ear.

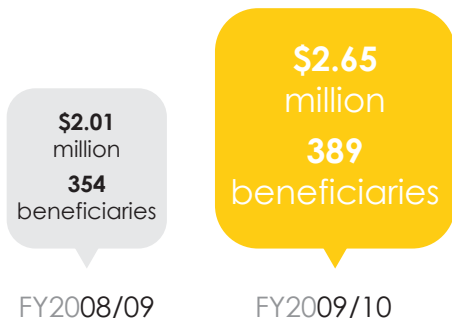
In FY 2009/10, the fund helped a total of 384 local women and children, an increase of 8.5% over FY2008/09 when there were 354 beneficiaries. Many of the patients suffer from long-term or critical illnesses, such as cancer, HIV, gynaecological and other chronic conditions, which can be financially draining in terms of the cost of medical treatment, even for a typical middle-income family.

As part of our regional outreach, the fund also helped five underprivileged children with complex conditions from Indonesia, Malaysia and Myanmar. These children were unable to obtain treatment in their home countries as the available level of surgical expertise could not meet their needs.

We were able to reach out to more beneficiaries thanks to the generosity of our partners, fundraisers, donors and volunteers, who gave their heartiest support towards KKHHEF and brightened the lives of so many children and women in need. I am also appreciative and thankful to our dedicated Board of Trustees for their compassion, leadership and commitment to KKHHEF's cause.

As the new year approaches, we look forward to bringing assistance to more women and children in need. Through the support of our partners and donors, I am confident that KKHHEF can help alleviate the burden of financial worry in the lives of many more beneficiaries to come, so that they can focus on recovering and on their loved ones.

**Professor Tan Ser Kiat**  
**Chairman**  
**Board of Trustees**  
**KKHHEF**



**Compared to the previous FY, KKHHEF has helped more beneficiaries and disbursed a higher amount of funds to support their needs in FY2009/10.**

## OUR BENEFICIARIES

### Local Patients

In FY2009/10, 389 beneficiaries, out of which 384 are local women and children, received a total of \$2.65 million in financial aid for medical treatment of cancer, HIV, gynaecological and other chronic conditions.

Joan (not her real name) was diagnosed with Biliary Atresia, a rare liver condition in newborn infants. Since 2008, Joan's parents have been struggling to make ends meet, despite working very hard. At one point, Joan's mother even took on two jobs. Through the KKHHEF, Joan's parents are now able to cope with her medical bills and Joan also receives a special milk formula for her illness.

### Foreign Patients

Underprivileged children from regional countries can receive help at KKH through the KK Regional Outreach to Kids (KKROK) fund. The KKROK fund is a sub-fund of the KKHHEF and helps needy children from the region with complex conditions who cannot get treated in their own countries as the available surgical expertise cannot meet the children's needs.

In FY2009/10, with funding from KKROK, five underprivileged children who suffer from rare and complex medical conditions underwent surgery in KKH. The five beneficiaries are from Myanmar, Malaysia and Indonesia.

Naw Htoo Say Phaw, a 14-year-old girl from Myanmar, was born with a hole in her heart. Naw's family is very poor and could not afford to send her for treatment. Furthermore, there is no available surgical expertise in her country that could treat her. Through the KKROK, Naw went through a successful operation in 2009. Currently, Naw is leading a full and healthy life back in her home country.



Naw Htoo Phaw (second from right) is now leading a full and healthy life

***KK Women's and Children's Hospital (KKH) is a hospital with a heart of compassion for the less fortunate. At KKH, patients who cannot afford their medical bills for critical or long-term illnesses can receive financial aid from the KK Hospital Health Endowment Fund (KKHHEF).***

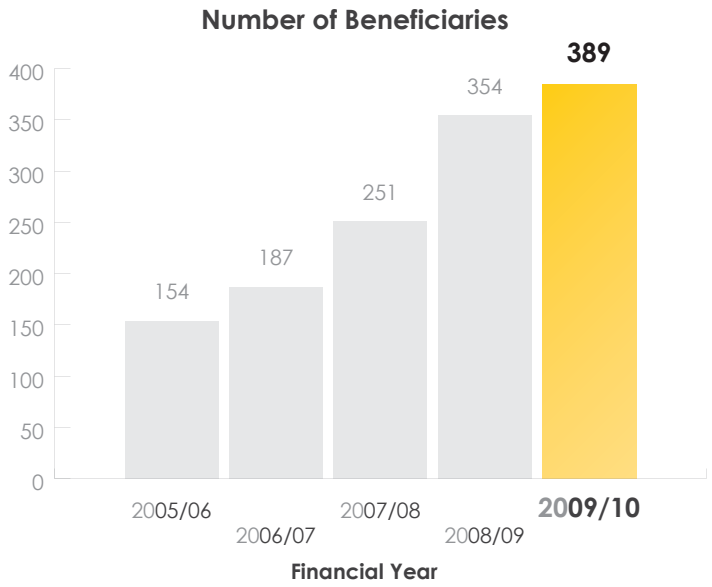
**Viriya-KK Children's Hospital HomeCare Programme**

The Viriya-KK Children's Hospital HomeCare Programme was established by KKH and Viriya Community Services (VCS) to provide financial, community and emotional support to chronically-ill children and their families.

VCS has contributed a yearly amount of \$240,000 to KKHHEF in support of this Programme since 2004. The programme has helped some 450 children since its establishment.

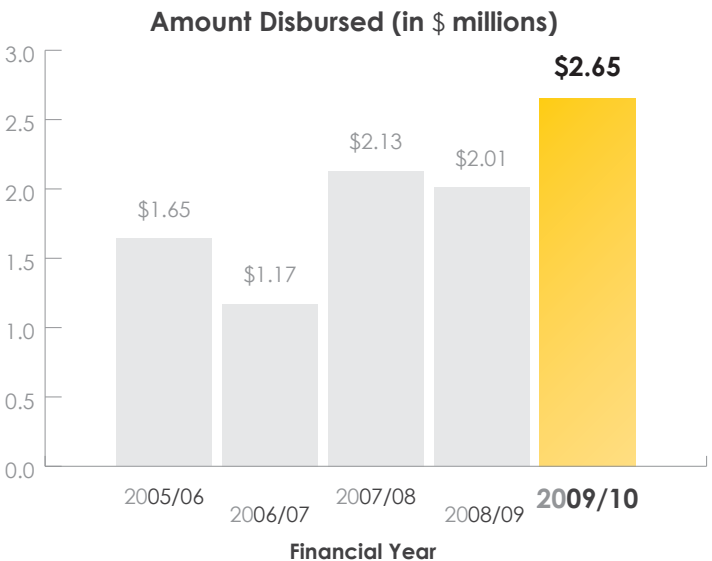
**Chart 1: Number of Beneficiaries**

The number of beneficiaries that KKHHEF assists has been increasing over the years. In FY2009/10, the total number of beneficiaries was 389 whereas in the previous FY, it was 354.



**Chart 2: Amount Disbursed to Beneficiaries**

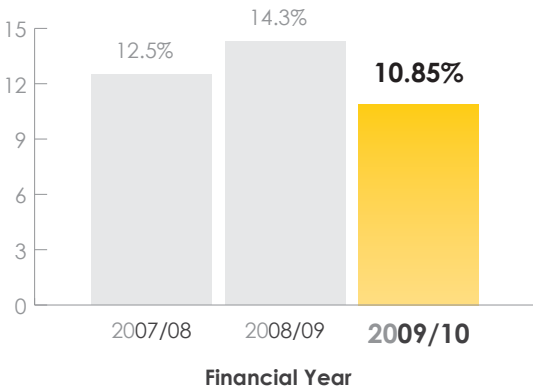
In FY2009/10, KKHHEF disbursed a total of \$2.65 million to 389 beneficiaries, which is an increase of about 31.8% over the amount disbursed for the previous FY.



## FUNDRAISING EVENTS AND ACTIVITIES

In FY2009/10, the support from generous individuals, corporations and foundations, as well as prudent management of funds, enabled KKHHEF to reach out to more needy patients.

### Average Fundraising Efficiency



### Kidz Horizon Appeal

The Kidz Horizon Appeal was set up in 2004 and comprises a group of like-minded friends who come together to help less fortunate needy children who are ill. Over the years, the Appeal has raised an average of \$1.0 million a year to support needy children with cancer, HIV and other chronic conditions, a Play Therapy programme to make the hospital experience less threatening, as well as pregnant women with HIV.

For 2010, Kidz Horizon Appeal has planned for a charity golf tournament and Charity Gala Dinner in support of the KKHHEF.



### Project MISSION: I'MPOSSIBLE

MISSION: I'MPOSSIBLE (MIP) is a three-year programme which started in 2009 and is championed by the Lien Foundation. Their aim is to complement the current Child Development Programme and strengthen the support network for preschool children with developmental needs. Besides KKH, this programme also involves PAP Community Foundation/PCF Pasir Ris-Punggol GRC and Ngee Ann Polytechnic.

Through the MIP, Lien Foundation donated \$391,000 to KKH in 2009 and plans to disburse a total of about \$1.1 million to KKH by June 2011.

### Premmies Fund

Every year, KKH sees about 10 to 12 cases of parents with premature babies who have difficulty affording the high cost of medical treatment associated with premature babies. In response to this need, the KK Hospital Health Endowment Fund set up the Premmies Fund in 2009 with a seed donation of \$100,000 by Mr Tan Chin Hwee. The aim of the Premmies Fund is to lighten the financial burdens of parents with premature babies.

### Molly Lee Appeal

The Molly Lee Appeal is established for needy women with cancer and other chronic conditions. The Appeal was set up in memory of Molly Lee, following her demise from ovarian cancer. In 2009, the Appeal raised \$91,437 for KKHHEF.

As part of their fundraising efforts for the Molly Lee Appeal, the Association of Women Doctors (Singapore), AWDS, organised a self-defence workshop on September 26, 2009. The proceeds from the workshops were donated to the Molly Lee Appeal.



The AWDS organised a self-defence workshop for women

### Viriya Community Services

Viriya Community Services (VCS) is a charitable organisation which has supported the Viriya-KK Children's Hospital HomeCare Programme since 2004. This programme provides community and social services to low income families in Singapore. Through the programme, VCS has donated a yearly amount of \$240,000.

## FINANCIAL REPORT

	2007 01/04/07 to 31/03/08 (S\$'000)	2008 01/04/08 to 31/03/09 (S\$'000)	2009 01/04/09 to 31/03/10 (S\$'000)	% Increase/ (Decrease) [Year 2009 on Year 2008]
<b>Income</b>				
Donations in Cash				
Tax Deductible <sup>1</sup>	2,183	1,668	2,753	65
Non-Tax Deductible	805	375	415	11
Donations in Kind				
Tax Deductible	NA	NA	NA	NA
Non-Tax Deductible				
Grants/Sponsorships	94	134	NA	(100)
Investment income	77	54	26	(52)
Investment gains	NA	NA	NA	NA
Others (please specify if material)	NA	NA	NA	NA
<b>Total Income</b>	<b>3,159</b>	<b>2,231</b>	<b>3,194</b>	<b>43</b>
<b>Expenses</b>				
Direct Fund-raising Expenses <sup>2</sup>	277	393	8	(98)
Charitable Activities Expenses <sup>3</sup>				
Local	2,126	2,010	2,645	32
Overseas				
Other Operating & Administration Expenses <sup>4</sup>	8	7	11	57
Others (please specify if material)	NA	NA	NA	NA
<b>Total Expenditure</b>	<b>2,411</b>	<b>2,410</b>	<b>2,664</b>	<b>11</b>
<b>Surplus/(Deficit)</b>	<b>748</b>	<b>(179)</b>	<b>530</b>	<b>396</b>

<sup>1</sup> These include donations collected through flag days, donations that entail benefits to the donors and donations received for overseas purposes.

<sup>2</sup> This refers to costs directly incurred and paid for during fund-raising. They include such costs as advertisements, printing, publicity materials, rental of premises, logistics, hiring of commercial third-party fund-raisers, organizing games of chance, etc.

<sup>3</sup> These are all resources applied by the charity in undertaking its work to meet its charitable objectives in the delivery of goods and services. Such costs include the direct costs of the charitable activities together with those support costs incurred that enable these activities to be undertaken

<sup>4</sup> These are expenses which relate to the general running of the charity that provide the governance infrastructure which allows the charity to operate, to generate the information required for public accountability, and the strategic planning processes that contribute to future development of the charity.

	<b>FINANCIAL REPORT</b>			
<b>Balance Sheet</b>	<b>2007 01/04/07 to 31/03/08 (\$'000)</b>	<b>2008 01/04/08 to 31/03/09 (\$'000)</b>	<b>2009 01/04/09 to 31/03/10 (\$'000)</b>	<b>% Increase/ (Decrease) [Year 2009 on Year 2008]</b>
<b>Assets</b>				
Land & Buildings	NA	NA	NA	NA
Other Tangible Assets	NA	NA	NA	NA
Investments	NA	NA	NA	NA
Inventories	NA	NA	NA	NA
Accounts Receivable	650	141	79	(44)
Cash & Deposits	3,463	3,835	4,351	13
Others (Please specify if material)	NA	NA	NA	NA
<b>Total Assets</b>	<b>4,113</b>	<b>3,976</b>	<b>4,430</b>	<b>11</b>
<b>Funds</b>				
Unrestricted Fund <sup>5</sup>	782	1,063	1,474	39
Restricted Fund <sup>6</sup>	2,891	2,430	2,549	5
Endowment Fund <sup>7</sup>	NA	NA	NA	NA
<b>Total Funds</b>	<b>3,673</b>	<b>3,493</b>	<b>4,023</b>	<b>15</b>
<b>Liabilities</b>				
Long-term Liabilities	NA	NA	NA	NA
Current Liabilities	440	483	407	(16)
<b>Total Liabilities</b>	<b>440</b>	<b>483</b>	<b>407</b>	<b>(16)</b>
<b>Total Funds and Liabilities</b>	<b>4,113</b>	<b>3,976</b>	<b>4,430</b>	<b>11</b>
<b>Other Information</b>	<b>2007 01/04/07 to 31/03/08 (\$'000)</b>	<b>2008 01/04/08 to 31/03/09 (\$'000)</b>	<b>2009 01/04/09 to 31/03/10 (\$'000)</b>	<b>% Increase/ (Decrease) [Year 2009 on Year 2008]</b>
Donations/Grants and Sponsorships given to other Charities (\$'000)	NA	NA	NA	NA
No. of Employees	NA	NA	NA	NA
Total Employee Costs (\$'000)	NA	NA	NA	NA
Total Related Party Transactions (\$'000) <sup>8</sup>	140	146	300	105.0%
Fund-raising efficiency <sup>9</sup>	9%	18%	0.3%	(17.7%)
Ratio of reserves to annual operating expenditure <sup>10</sup>	1.72	1.73	1.51	(22.0%)

<sup>5</sup> These are generally unrestricted funds which the IPC is free to use for its programmes and operating costs e.g. General Fund.

<sup>6</sup> These are special funds held by the IPC that can only be applied for specific purposes, e.g. Specific Program/Medical Condition.

<sup>7</sup> These are funds which the IPC holds in trust for the benefit of the IPC as a capital fund. Generally, only interest income from Endowment Funds are used, and not the capital sum.

<sup>8</sup> Related Party Transactions refer to transactions between the IPC and another person where either person could have influence over the other. For example, if a board member of an IPC is related to a certain supplier of services for the IPC, the value of the transactions should be disclosed. Refer to the Financial Reporting Standards for the full definition of Related Party Transactions.

<sup>9</sup> This is expressed in the ratio of A to B, where A refers to Direct Fund-raising Expenses and sponsorships relating to fund-raising (where receipts have been issued by sponsors); and B refers to total donations received from fund-raising and sponsorships relating to fund-raising (where receipts have been issued by sponsors).

<sup>10</sup> This is expressed in the ratio of C to D, where C refers to Unrestricted and Restricted Funds; and D refers to Charitable Activities Expenses and Other Operating and Administration Expenses.

## MAJOR DONORS

---

### More than \$60,000

Association of Women Doctors (Singapore)  
Ching Chiat Kwong  
Kidz Horizon Appeal  
KK Women's and Children's Hospital Pte Ltd  
Lien Foundation  
Michelle Lee Lay Ching  
Molly Lee Appeal  
Singapore Totalisator Board  
Tan Chin Hwee  
Tan Kwang Hwee  
Viriya Community Services

### \$25,000 to \$59,999

Hoe Koon Fong  
Lee Foundation  
New Century Foundation  
Operation Smile Singapore  
Shaw Foundation  
Tan Chin Tuan Foundation

### \$10,000 to \$24,999

Becton Dickinson & Company  
Crystal Jade Culinary Concepts Holding  
Hu Kwang Ren Peter  
Kim Eng Securities Pte Ltd  
Oversea-Chinese Banking Corporation Limited

### \$2,500 to \$9,999

Chay Oh Moh  
Christopher Chelliah  
FCI Retail Concepts Pte Ltd  
Goh Foundation  
Ng Siew Khim  
Pharmatech Resources (FE) Pte Ltd  
Tan Ean Kiam Foundation  
Tan Siew See

### \$500 to \$2,499

Benjamin Wong Kok Loon  
Chan Chin Siong Patrick  
Chan Kwok Wing Gary  
Chen Mui Lee  
Cheng Sou Mei  
Chong Pik Wan  
Chua Pek Kim  
Elite JFP Group  
Franklin Tan  
Goh Mee See  
Herman R Hochstadt  
Hu Yin Hsien Allen  
Khoo Boo Jin  
Lai Wai Yin Vincent  
Lau Ying Hui  
Lee Mei Sim  
Leow Boon Tuan Justin  
LHS Electronics Enterprise  
Lim Eng Kim Janet  
L'oreal Singapore Pte Ltd  
Ng Kian Sin  
Ng Swee Lian Ivy  
Ngim Siong Choo  
Ong Yen Ling  
Ooi Cheng Pheng Rina  
Royal Thai Embassy Singapore  
Seah Hui Tong  
SGM Business Solutions Pte Ltd  
Sharon Furness  
Sia Wan Ling  
Su Lee Siong  
Tamilselvi D/O Taangavelu  
Tan Kene Thiam  
Tan Kheng Ju  
Tay Pei Pei  
Tow Yi Fei Faye  
Unimed Healthcare Pte Ltd

Thank  
You!





Printed on recycled paper

**KK Women's and Children's Hospital**  
100 Bukit Timah Road Singapore 229899  
Tel: +65 6394 2329/2327 Fax: +65 6394 8268