

To deliver enhanced care services to our patients, we are expanding and improving our rehabilitation facilities.

From December 2020, a part of KKH Rehabilitation outpatient services has been relocated to National Heart Centre Singapore (NHCS). The new facility is located at Level 7 of NHCS, and is more spacious and comprehensively equipped.

Services include:

- Physiotherapy
- Occupational Therapy
- Speech Language Therapy



★ **KKH Rehabilitation Centre@National Heart Centre Singapore (NHCS)**

Level 7, National Heart Centre Singapore  
5 Hospital Drive  
Singapore 169609

## How to Get to KKH Rehabilitation Centre@ National Heart Centre Singapore (NHCS)



### By Car

#### Carparks

NHCS has three basement carparks at levels BM, B1 and B2. Carpark lots are also available at Outram Community Hospital/SingHealth Tower. Parking rates are as follows:

#### Mondays to Saturdays

7.00am to 9.59pm: \$0.036 per minute, \$2.16 per hour  
10.00pm to 6.59am: \$2.14 per entry

#### Sundays and Public Holidays

7.00am to 9.59pm: \$0.018 per minute, \$1.08 per hour  
10.00pm to 6.59am: \$2.14 per entry

Information is correct at time of printing. Pricing may be subjected to change without prior notice.



### By Train

The nearest MRT station is Outram Park station (East-West EW16/North-East NE3) and the exit closest to NHCS is Exit F.

From February 2021, access from East West Line to NHCS will be affected by demolition of the overhead bridge along Outram Road. You may use the underpass towards North East Line or the traffic lights.



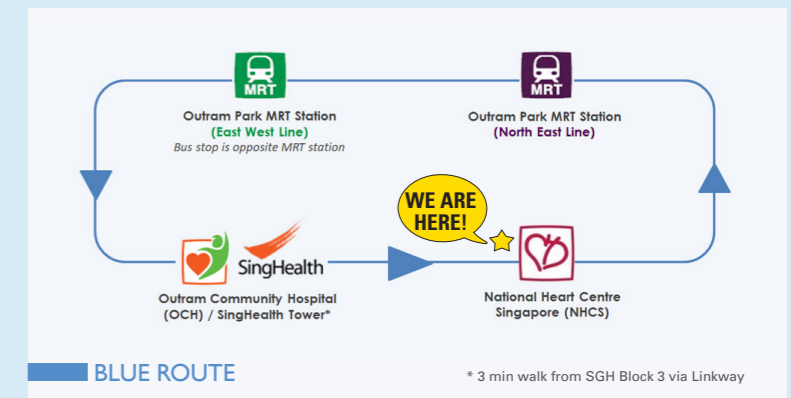
### By Train

The nearest MRT station is Outram Park station (East-West EW16/North-East NE3) and the exit closest to NHCS is Exit F.



### By Free SGH Campus Shuttle Service

The free SGH shuttle service serves different destinations within SGH campus. Please use the **BLUE ROUTE** towards National Heart Centre Singapore (NHCS).



#### Operating Hours:

8.00am to 7.00pm, Mondays to Fridays  
8.00am to 2.00pm, Saturdays  
No service on Sundays and Public Holidays  
Bus frequency: Approximately 20 minutes interval

#### Wheelchair Shuttle Service

If required, free wheelchair shuttle service is provided to and from Outram Park MRT Station (North-East Line). For more information, please visit the website at <https://www.sgh.com.sg/patient-care/visitor-information>.

## Frequently Asked Questions

### Why is the KKH Rehabilitation services relocated to National Heart Centre Singapore (NHCS)?

The relocation of the KKH Rehabilitation services to NHCS allow us to provide enhanced services within a larger facility.

### Is the new KKH Rehabilitation Centre@NHCS under KK Women's and Children's Hospital (KKH) or Singapore General Hospital (SGH)?

As the KKH Rehabilitation services (Physiotherapy, Occupational Therapy, Speech Language Therapy) have relocated to NHCS, you will receive the same service by KKH therapists at the new facility.

### How do I know if my next rehabilitation appointment is at National Heart Centre Singapore (NHCS) or at KKH?

An SMS will be sent to you when your next appointment is booked. The SMS will indicate the location for your next appointment.

### I have received multiple text messages for my future appointments indicating different locations, why is this so? How do I check if there is an error in the location of my appointments?

For appointments scheduled before December 2020, all services will be provided at KKH. After December 2020, all scheduled appointments of indicated services will be at the new KKH Rehabilitation Centre@NHCS.



You may wish to confirm your appointment with KKH Central Appointments at 6294-4050, or to check with our KKH Rehabilitation Centre staff.

### If my rehabilitation appointment is at KKH Rehabilitation Centre@NHCS, how do I reschedule my appointment?

The process of rescheduling an appointment is unchanged. You may log on to the HealthBuddy mobile app with your SingPass to reschedule your appointment.

Alternatively, you may call KKH Central Appointments at 6294-4050.

Operating hours for KKH Central Appointments are from Mondays to Fridays, 8.30am to 5.30pm; Saturdays, 8.30am to 1.00pm; closed on Sundays and Public Holidays. You may also write in to centralappt@kkh.com.sg.

### If my appointment is at KKH Rehabilitation Centre@NHCS, how do I make payment?

You may make your payment at the self-service kiosks. Located in KKH Rehabilitation Centre@NHCS.

Mobile payment mode is available via HealthBuddy mobile app (SingPass login required). Other payment modes such as via internet banking or AXS machine are also available.

### I am unable to make payment for KKH Rehabilitation Centre@NHCS services using the kiosks in SGH, why is this so?

As the KKH Rehabilitation Centre@NHCS is operated by KKH, you can only use the self-service kiosks located in KKH Rehabilitation Centre@NHCS, or any of the self-service kiosks located within KKH.

Alternatively you may use other existing payment methods, mentioned above.

### My next appointment with the doctor is in KKH, and I do not wish to go to NHCS, can I choose to have my appointments at KKH?

As the indicated KKH Rehabilitation services have been relocated to NHCS, you will receive the same service by KKH therapists at the new facility. We are unable to book any similar appointment in KKH.



100 Bukit Timah Road  
Singapore 229899  
Tel: 6-CALL KKH (6-2255 554)  
Fax: 6293-7933  
Website: [www.kkh.com.sg](http://www.kkh.com.sg)  
[www.facebook.com/kkh.sg](https://www.facebook.com/kkh.sg)

Information is correct as at March 2021.

### To receive services from KKH Rehabilitation Centre@NHCS, do I obtain a referral from a KKH doctor?

The referral system remains the same. You will need to obtain a valid KKH doctor's referral to be seen at the KKH Rehabilitation Centre@NHCS.

For non-KKH referrals, please check with your healthcare provider.

#### Contact Us

**For Appointment Enquiries**  
KKH Central Appointments  
Tel : 6294-4050

**For Feedback**  
Email : [feedback@kkh.com.sg](mailto:feedback@kkh.com.sg)



From Dec  
2020

## Bringing Enhanced Care - KKH Rehabilitation Centre@ National Heart Centre Singapore (NHCS)



Reg No 198904227G AREHABnhcs0321

PATIENTS. AT THE HEART OF ALL WE DO.®